

TKI-LSH Amsterdam UMC-PPP

by

IXA

Maaïke Alderliesten
Wim Meijberg

23 April 2024

IXA is the valorisation centre of:



What's it all about?

Abbreviation	
TKI	Top consortium Knowledge & Innovation
LSH	Life Sciences & Health
PPP	Public Private Partnership
IXA	Innovation Exchange Amsterdam
HH	Health Holland

And where does it come from?



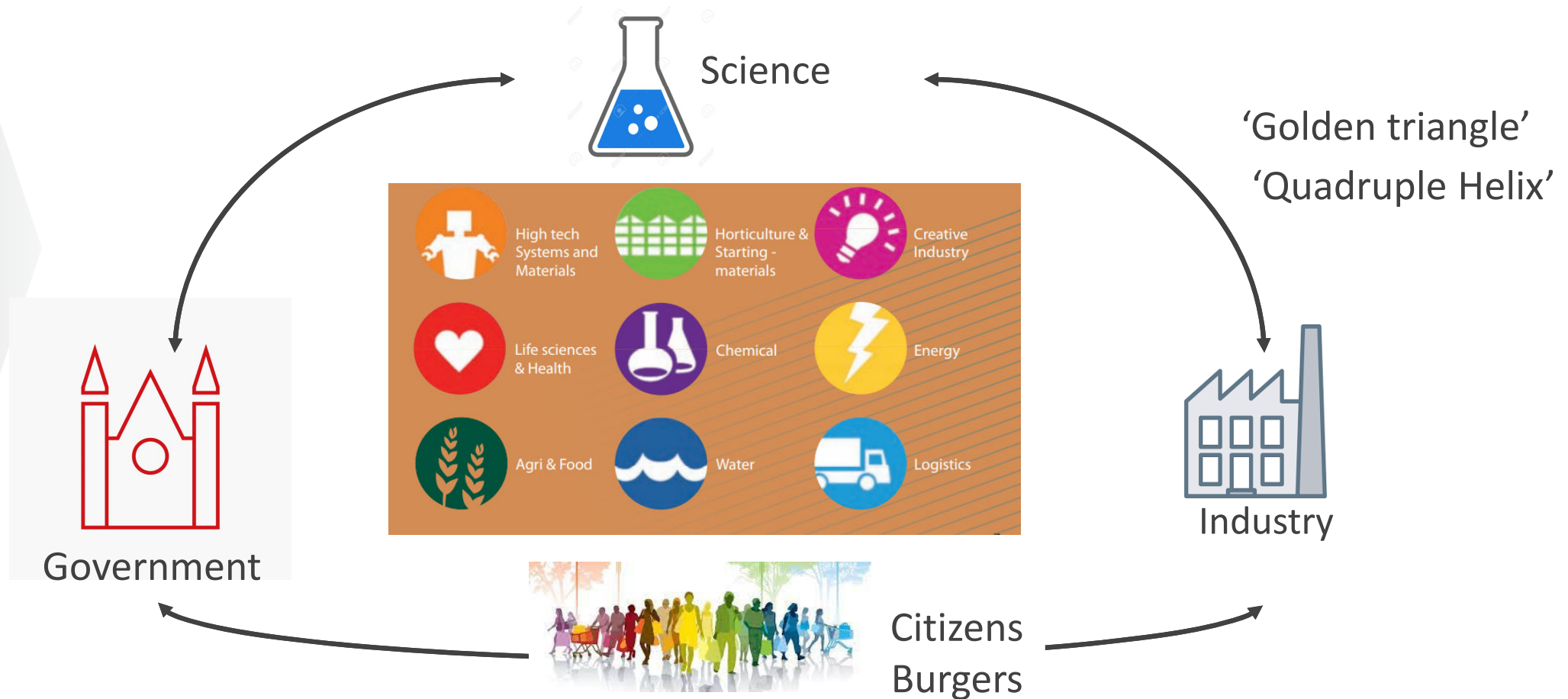
Policy goals

- Maintain sustainable economic growth
- Firm approach to societal changes
 - ageing population
 - climate change
- Stimulate collaboration academic and private sector



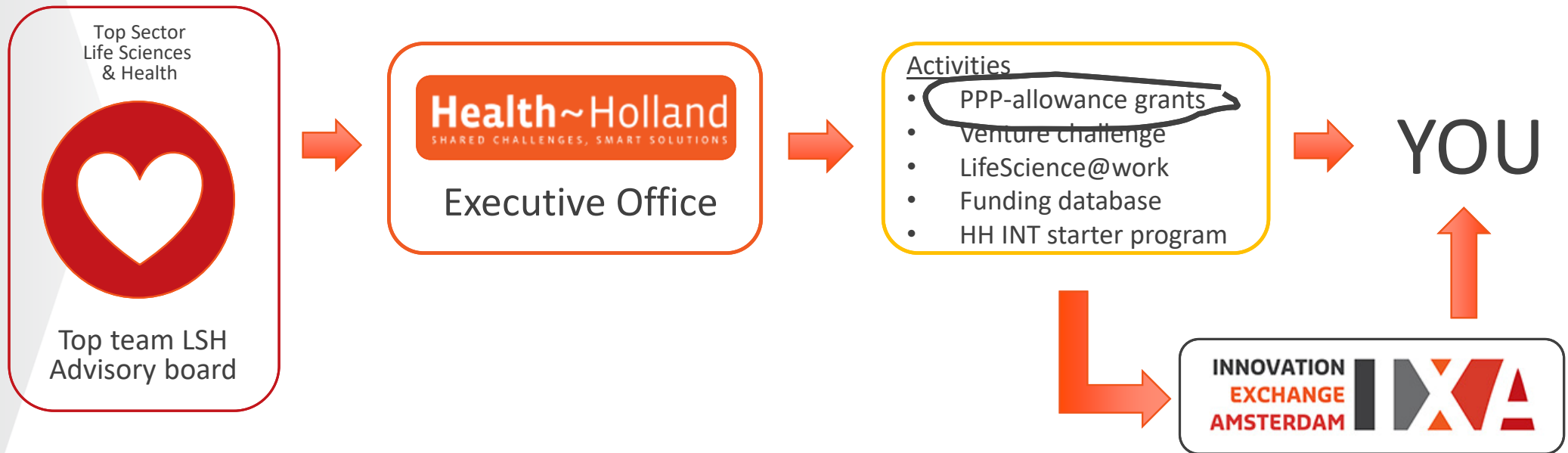
Top sectors

The Netherlands are a global leader in



Top sector Life Sciences & Health

a.k.a. Top consortium Knowledge & Innovation - Life Sciences & Health (TKI-LSH)



<https://www.health-holland.com/>

Partner allocations 2014-2023

- ▶ Grondslag procedure
- ▶ Yearly funding based on funding received for eligible projects the previous year
 - ▶ ANBI-funded projects
 - ▶ Collaborations with private partners
 - ▶ ‘Fee-for-service’ projects (incl Phase 1, 2 clinical trials)
- ▶ 2024 – pilot year
- ▶ From 2025 – new procedure (TBD)

Amsterdam UMC 2024 – pilot call



ca. 4 Mln euro

available PPP – subsidy

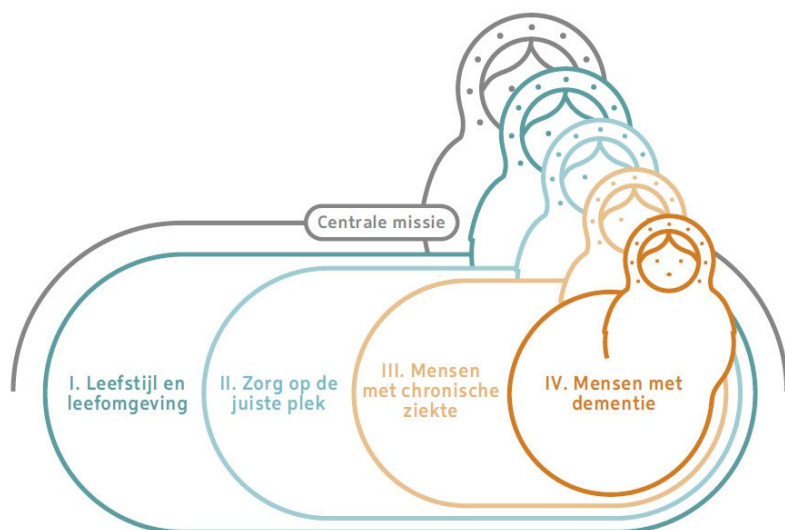
2024 AUMC Pilot vs 2023 TKI call

- ▶ Total amount 4 vs 9 million available
- ▶ Timing
 - ▶ Allocation received in Feb vs Nov
 - ▶ Projects finalized 31st Dec 2029 – no extensions possible
- ▶ Budgeting rules adapted
 - ▶ % PPS subsidy for fundamental, industrial, exp development (70, 70, 60%)
 - ▶ Dutch SME can now also receive subsidy (max 60% of their costs)
 - ▶ Subsidy per project 200 k < subsidy < 500 k

PPP-allowance grants general conditions

- ▶ Research fits within [Kennis- en Innovatieagenda Gezondheid & Zorg 2024-2027](#)
 - ▶ [link in theTKI flyer](#)

KIA Mission Statements



- Central Mission:
By 2040, all Dutch citizens will live at least five years longer in good health, while the health inequalities between the lowest and highest socio-economic groups will have decreased by 30%.
- Mission I:
By 2040, the burden of disease resulting from an unhealthy lifestyle and living environment will have decreased by 30%.
- Mission II:
By 2030, the extent of care provided to people within their own living environment (rather than in health-care institutions) will be 50% more than today or such care will be provided 50% more frequently than at present.
- Mission III:
By 2030, the proportion of people with a chronic disease or lifelong disability who can play an active role in society according to their wishes and capabilities will have increased by 25%.
- Mission IV:
By 2030, quality of life for people with dementia will have improved by 25%.
- Mission V:
By 2035, society will be better protected against socially disruptive health threats

PPP-allowance grants

general conditions

- ▶ Research fits within Knowledge and Innovation Agenda 2020-2023
Mission statements
 - ▶ link in theTKI flyer
- ▶ Public Private Partnerships with at least one Industrial partner/SME
- ▶ Collaborative program
 - ▶ Each partner makes a substantial contribution
 - ▶ Project at joint cost & risk
- ▶ Main applicant is located in The Netherlands
- ▶ IP: 'ownership follows inventorship'
- ▶ Research Institutes Foreground IP remains with Research Institutes
 - ▶ Option for private partners to acquire IP against market conform conditions and taking into account previous contributions to the project is allowed

Amsterdam UMC PPP call for proposals

- ▶ Call open to all Amsterdam UMC Researchers
 - ▶ Meibergdreef & De Boelelaan
- ▶ Amount: 200k < Subsidy < 500k
- ▶ Maximum duration of the project 4 years
 - ▶ to be completed in 31st December 2029 – no extensions
 - ▶ Consortium Agreement needs to be in place before project start
 - ▶ CA specific for Amsterdam UMC PPP-projects
 - ▶ CA in place 6 weeks after allowance: end March 2025
- ▶ Project is not funded otherwise
- ▶ Statement on Conflict of Interest required

Project application procedure

- ▶ Pre-proposal (ca 3 A4) – all AUMC researchers
 - ▶ Clear description of the project - template provided
 - ▶ Clear budget – Excel template provided
 - ▶ Contribution of each of the consortium partners
 - ▶ Letter(s) of Intent of private partners – template provided
 - ▶ Involvement of IXA-business developer and AMR project controller/ financial advisor is mandatory
 - ▶ Deadline: 24 May 2024
- ▶ Full Proposal – highest ranked projects only
 - ▶ # projects invited depends on total budget requested (1.5x 4 = ~6 Meuro)

Criteria for ranking

- ▶ Scientific quality (max 3 pts).
- ▶ Feasibility (max 3 pts).
- ▶ Potential relevance to society (impact/utilization) (max 3 pts)
- ▶ **The average jury scores for scientific quality, feasibility and impact should each be rated ≥ 3 on a scale of 1-5 (a score of 5 translates into the max. of 3 pts).**
- ▶ Preferred Projects are granted bonus points (0.5 pts).
 - ▶ *Further development of an AUMC patent application or other exploitable technology described in an IXA invention disclosure form*
- ▶ Number of industrial partners (0.05 pts per partner, with max 0.15 pts for 3 or more partners).
- ▶ Amount of in cash contribution by industrial partner(s) (0.05 pts for every 10K cash contribution up to a max of 1.0 pts for a 200K or larger contribution).

Budget

- ▶ Subsidy dependent on research stage
- ▶ Classification subject to approval by TKI-LSH!

	Type of Research		
	Fundamental (TRL 1-3)	Industrial (TRL 4-6)	Experimental development (TRL 7)
Maximum % PPP-subsidy based on eligible costs partner			
Research Organisation	70%	70%	60%
Dutch SME	60%	60%	40%
Research Organisation*	min. 10%-max 15%	min. 10%-max 15%	min. 10%-max 15%
For-Profit Enterprise**	min. 15%	min. 15%*	min. 30%

* In cash or in kind **In cash and in kind

Budget

- ▶ Industrial parties contribute in kind/in cash and in kind
 - ▶ In kind FTE: who, what for
- ▶ Grant supports research at Research Institutes
 - ▶ Dutch SME's can receive PPP subsidy
- ▶ Use of specific Excel template is mandatory
- ▶ Budget must be approved by your AMR project controller or Financial advisor



Timelines

2024

- ▶ 11 April – Call for proposals open
- ▶ 17 May – Deadline for completion pre-application budget sheet
- ▶ 24 May – Deadline for registration (pre-proposals, budget, LoI)
- ▶ 15 July – Ranking completed by jury; decisions communicated to applicants
- ▶ 11 October – Deadline for completing the final budget sheet
- ▶ 18 October – Deadline for full proposals (incl budget, LoC, draft CA)

2025

- ▶ 31 January – Final ranking by jury, decisions communicated to applicants
- ▶ 28 March – Deadline finalizing and signing consortium agreement

Final Remarks

- ▶ Submit applications to Nanny Appel via tki@ixa.nl
- ▶ Involve your business developer and AMR project controller/ financial advisor !!

**INNOVATION
EXCHANGE
AMSTERDAM**



Partnering science for impact

IXA is the valorisation centre of



Budgetting Examples

IXA is the valorisation centre of:



Calculation example 1 - Research organization and Dutch SME.

The calculation example assumes a project consisting entirely of industrial research.

Consortium partners	Costs
Research organization X	€ 600.000
Dutch SME Y	€ 400.000
Total	€ 1.000.000

Consortium partners	Max. % PPP subsidy	Max. € PPP subsidy
Research organization X	70%	€ 420.000
Dutch SME Y	60%	€ 240.000
Total	66%	€ 660.000

*Percentage of PPP subsidy is calculated over the total cost of the partner in question.

Minimal required contributions	% of total cost*	Minimal contribution (€)
Research organization(s)	10%	€ 100.000
Enterprises (for-profit and non-profit).	15%	€ 150.000
Open amount to be freely funded based on cost and minimum required contribution	=€1.000.000 (cost) - €660.000 (max. PPP subsidy) - €250.000 (min. contributions)	€ 90.000

* Percentages for minimal required contributions are calculated over the total cost of the project.

Funding per partner

Consortium partners	Total cost	In kind	In cash	PPP subsidy
Research organization X	€ 600.000	€ 180.000	€ 0	€ 420.000
Dutch SME Y	€ 400.000	€ 160.000	€ 0	€ 240.000
Total	€ 1.000.000	€ 340.000	€ 0	€ 660.000



Calculation example 2 - Consortium consisting of four parties

The calculation example assumes a project consisting entirely of industrial research.

Consortium partners	Cost
Research organization X	€ 500.000
Dutch SME Y	€ 150.000
Large enterprise Z	€ 250.000
Hospital A	€ 100.000
Total	€ 1.000.000

Consortium partners	Max. % PPP subsidy	Max. € PPP subsidy
Research organization X	70%	€ 350.000
Dutch SME Y	60%	€ 90.000
Large enterprise Z	0%	€ 0
Hospital A	0%	€ 0
Total	44%	€ 440.000

*Percentage of PPP subsidy is calculated over the total cost of the partner in question.

Minimal required contributions	% of total cost*	Minimal contribution (€)
Research organization(s)	10%	€ 100.000
Enterprises (for-profit and non-profit).	15%	€ 150.000
Open amount to be freely funded based on cost and minimum required contribution	=€1.000.000 (cost) - €440.000 (max. PPP-subsidy) - €250.000 (min. contribution)	€ 310.000

*Percentage of PPP subsidy is calculated over the total costs of the project.

Funding per partner

Partijen	Total cost	In kind	In cash	PPP subsidy
Research organization X	€ 500.000	€ 125.000	(€ 25.000)*	€ 350.000
Dutch SME Y	€ 150.000	€ 60.000	€ 0	€ 90.000
Large enterprise Z	€ 250.000	€ 250.000	€ 50.000	€ 0
Hospital A	€ 100.000	€ 75.000	(€ 25.000)*	€ 0
Total	€ 1.000.000	€ 510.000	€ 50.000	€ 440.000

*The numbers in parentheses mean that these partners receive and use the private cash to cover part of their costs. In this case, the in cash contribution from the Large Enterprise is divided between Research Organization X and Hospital A.

